



Cambridge International AS & A Level

CANDIDATE
NAME

--

CENTRE
NUMBER

--	--	--	--	--

CANDIDATE
NUMBER

--	--	--	--



MATHEMATICS

9709/11

Paper 1 Pure Mathematics 1

October/November 2020

1 hour 50 minutes

You must answer on the question paper.

You will need: List of formulae (MF19)

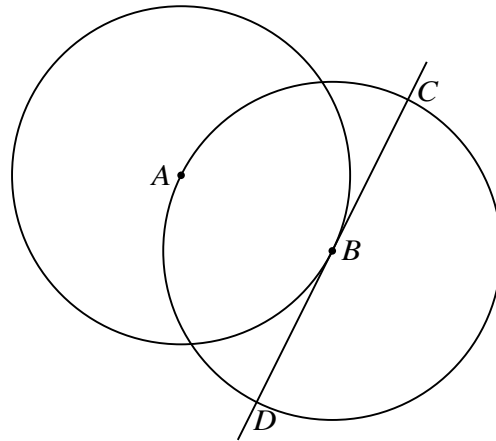
INSTRUCTIONS

- Answer **all** questions.
- Use a black or dark blue pen. You may use an HB pencil for any diagrams or graphs.
- Write your name, centre number and candidate number in the boxes at the top of the page.
- Write your answer to each question in the space provided.
- Do **not** use an erasable pen or correction fluid.
- Do **not** write on any bar codes.
- If additional space is needed, you should use the lined page at the end of this booklet; the question number or numbers must be clearly shown.
- You should use a calculator where appropriate.
- You must show all necessary working clearly; no marks will be given for unsupported answers from a calculator.
- Give non-exact numerical answers correct to 3 significant figures, or 1 decimal place for angles in degrees, unless a different level of accuracy is specified in the question.

INFORMATION

- The total mark for this paper is 75.
- The number of marks for each question or part question is shown in brackets [].

This document has **20** pages. Blank pages are indicated.



The diagram shows a circle with centre A passing through the point B . A second circle has centre B and passes through A . The tangent at B to the first circle intersects the second circle at C and D .

The coordinates of A are $(-1, 4)$ and the coordinates of B are $(3, 2)$.

(a) Find the equation of the tangent CBD . [2]

.....

.....

.....

.....

.....

.....

.....

.....

.....

.....

.....

.....

.....

.....

.....

.....

.....

.....

.....

.....

.....

.....

(b) Find an equation of the circle with centre B . [3]

.....

.....

.....

.....

.....

.....

.....

.....

.....

.....

.....

.....

.....

.....

.....

.....

.....

.....

.....

.....

.....

.....

(c) Find, by calculation, the x -coordinates of C and D . [3]

.....

.....

.....

.....

.....

.....

.....

.....

.....

.....

.....

.....

.....

.....

.....

.....

.....

.....

.....

.....

.....

.....

.....

It is now given that $r = 4$ and $\theta = \frac{1}{6}\pi$.

(b) Find the perimeter of sector CAB in terms of π . [3]

.....

.....

.....

.....

.....

.....

.....

.....

.....

.....

.....

.....

.....

.....

.....

.....

.....

.....

.....

.....

.....

.....

(c) Find the area of the shaded region in terms of π and $\sqrt{3}$. [4]

.....

.....

.....

.....

.....

.....

.....

.....

.....

.....

.....

.....

.....

.....

.....

.....

.....

.....

.....

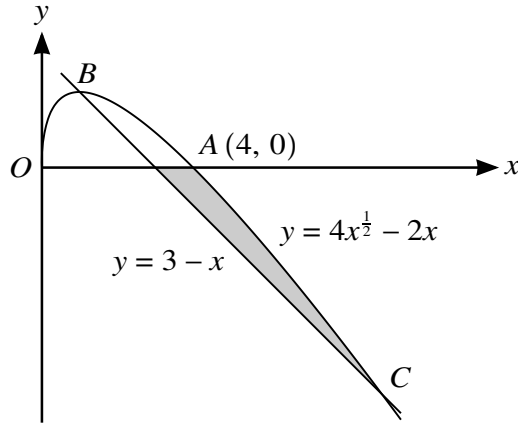
.....

.....

.....

.....

12



The diagram shows a curve with equation $y = 4x^{\frac{1}{2}} - 2x$ for $x \geq 0$, and a straight line with equation $y = 3 - x$. The curve crosses the x -axis at $A(4, 0)$ and crosses the straight line at B and C .

(a) Find, by calculation, the x -coordinates of B and C . [4]

.....

.....

.....

.....

.....

.....

.....

.....

.....

.....

.....

(b) Show that B is a stationary point on the curve. [2]

.....

.....

.....

.....

.....

.....

.....

